

Connecting the Region through Master Plan on ASEAN Connectivity (MPAC)

Lim Chze Cheen
ASEAN Connectivity Division
ASEAN Secretariat

Symposium on APEC Connectivity Blueprint
Qingdao, China
12 May 2014



The ASEAN Connectivity Challenge

Connecting
Peoples



Around **9%** of
world population.

Connecting
Land



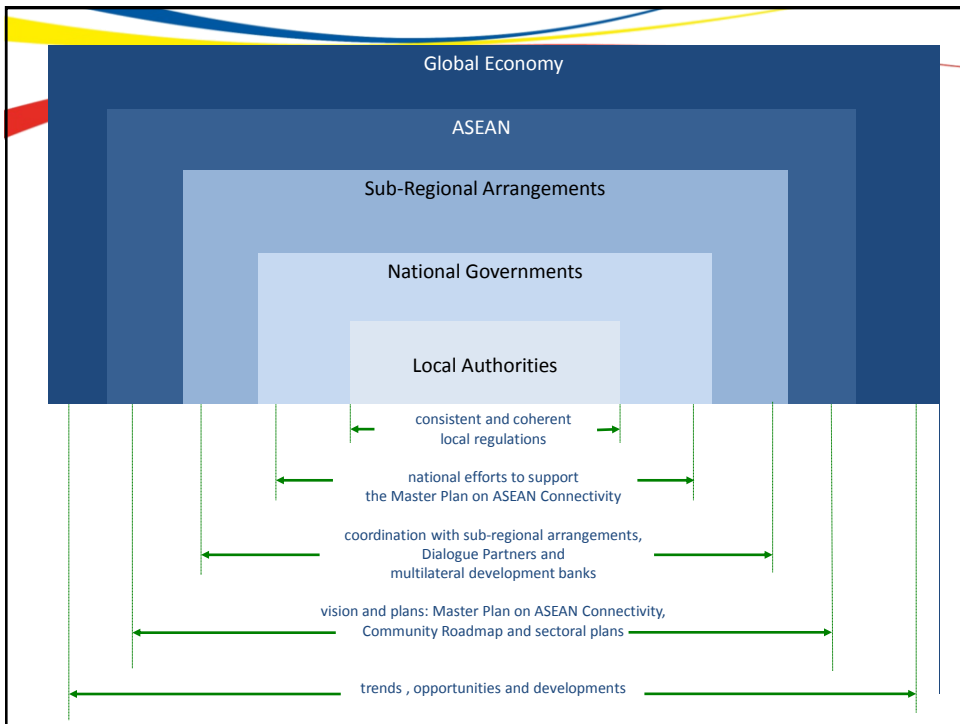
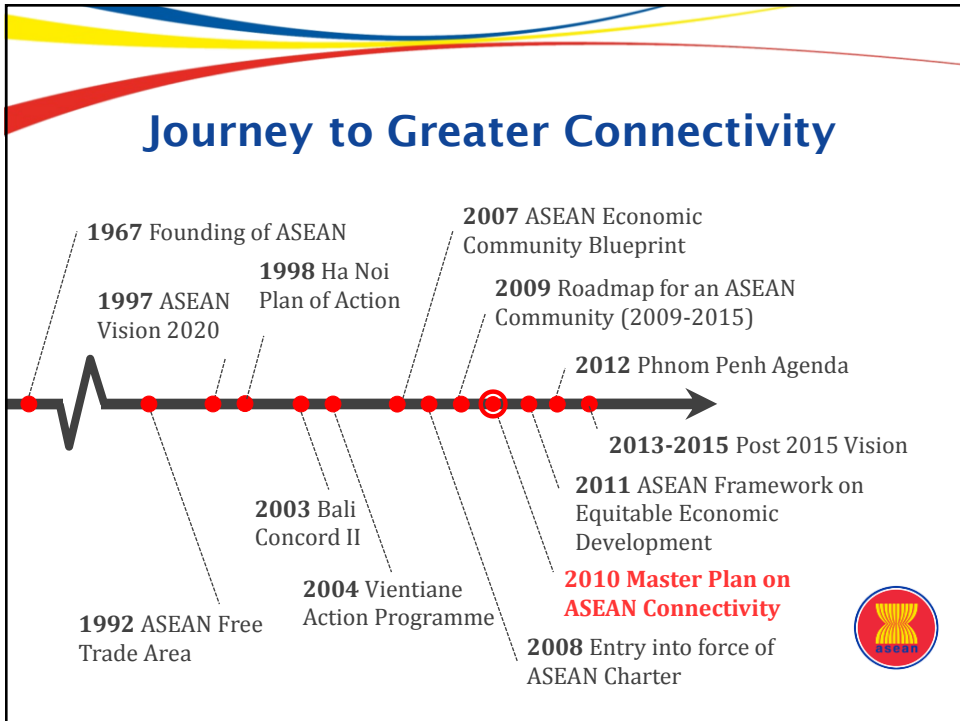
Around **3%** of
world's land
mass.

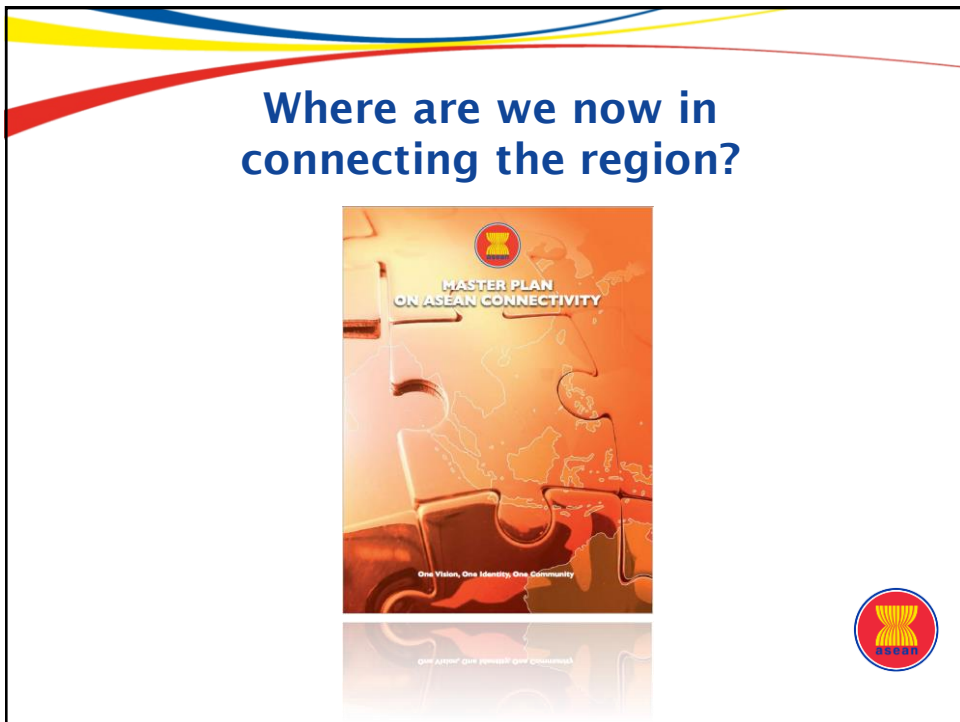
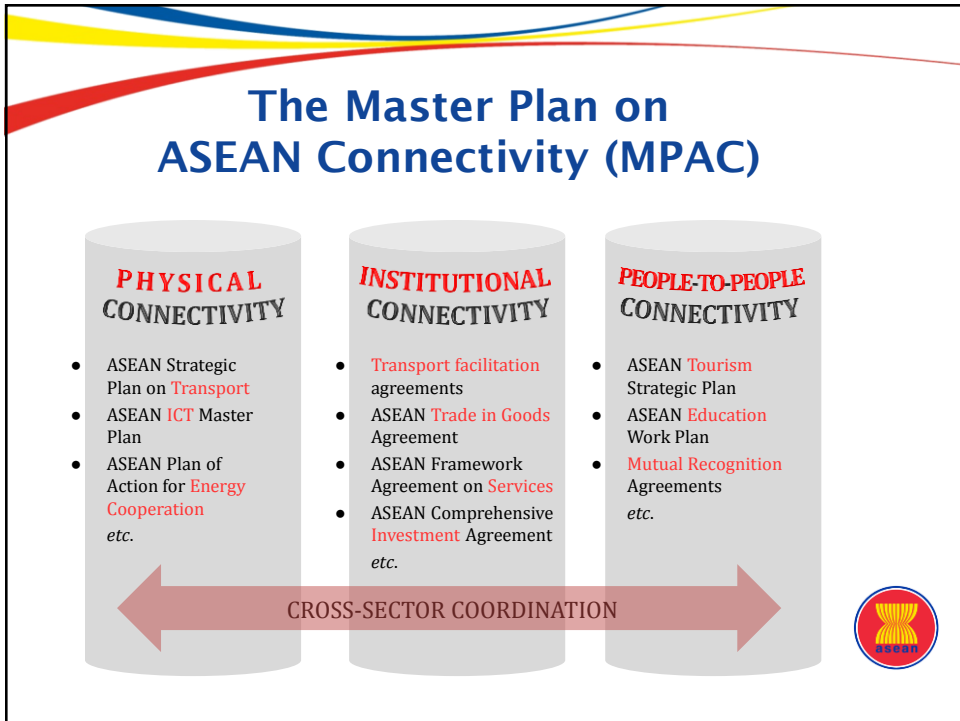
Connecting
Oceans



Around **three**
times larger
than available
land.







Infrastructure Financing Needs

Global

- USD 17.5 trillion over 10 years

Asia

- USD 8 trillion over 10 years

ASEAN

- USD 600 billion over 10 years

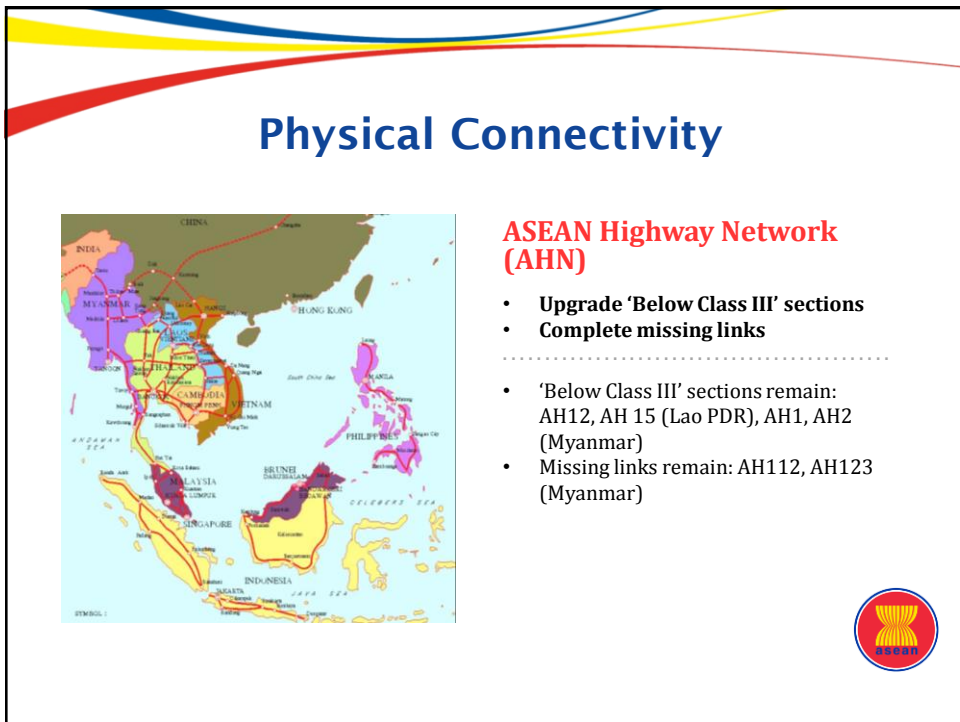
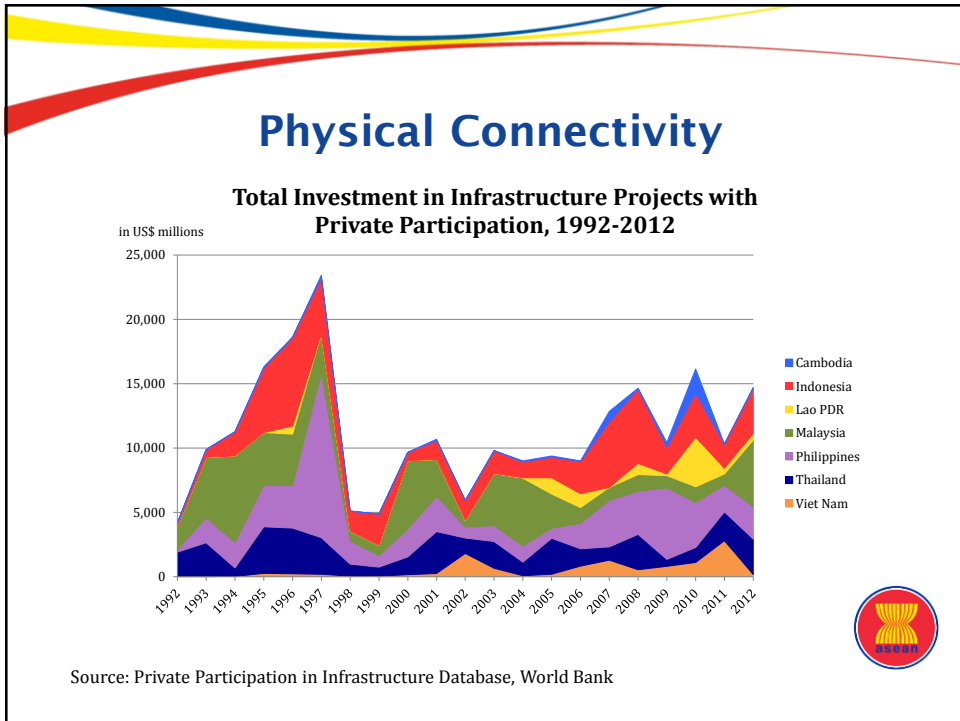


The Limits of Public Funding

Infrastructure Investment Needs as % of GDP (est.), 2010-2020

	Transport	Electricity	ICT	Water and Sanitation	Total
Cambodia	4.43	0.95	2.97	0.36	8.71
Indonesia	3.88	0.98	0.97	0.35	6.18
Lao PDR	10.62	0.00	2.40	0.60	13.61
Malaysia	1.94	4.42	0.27	0.04	6.68
Myanmar	2.70	0.00	1.46	1.88	6.04
Philippines	2.30	1.87	1.22	0.65	6.04
Thailand	0.58	3.69	0.45	0.19	4.91
Viet Nam	2.07	3.12	2.38	0.54	8.12

Source: Bhattacharyay, ADBI Working Paper, 2010



Physical Connectivity

Singapore-Kunming Rail Link (SKRL)

- **Construct missing links**

- Ongoing: Aranyaprathet-Klongluk (Thailand), Poipet-Sisophon (Cambodia)
- Feasibility study completed, seeking funding: Phnom Penh-Loc Ninh (Cambodia), Loc Ninh-Ho Chi Minh City (Viet Nam)
- Seeking technical assistance for feasibility study: Mu Gia-Tan Ap-Vung Ang (Viet Nam), Vientiane-Thakek-Mu Gia (Lao PDR)

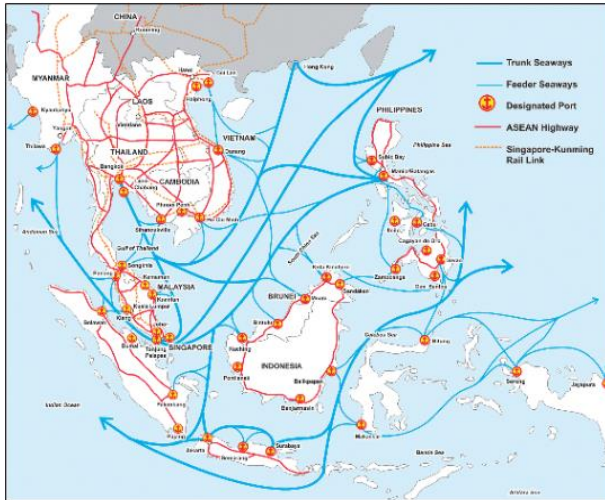
Physical Connectivity

Maritime Transport

- **Conduct feasibility study on the establishment of an ASEAN Roll-on/Roll-off (RO-RO) Network and Short-Sea Shipping**

- Study completed, recommendations on implementation of RO-RO prioritised routes and harmonisation of institutional arrangements made

Physical Connectivity



Source: ASEAN Maritime Transport Development Study, ALMEC Corp. 2002.

Maritime Transport

- Enhance the performance and capacity of the 47 designated ports
- Develop an ASEAN Single Shipping Market



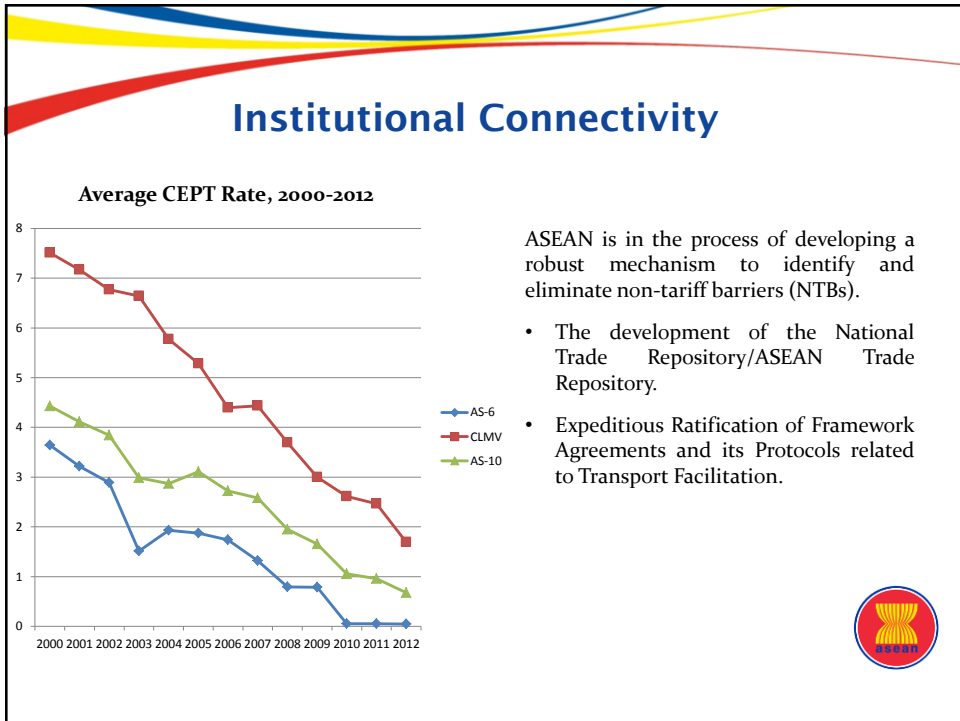
Physical Connectivity



ASEAN Power Grid

- Implement the Melaka-Pekan Baru Interconnection
- MOU signed by Indonesia and Malaysia in September 2012, expected COD in 2019
- Implement the West Kalimantan-Sarawak Interconnection
- Ongoing, expected COD in 2015



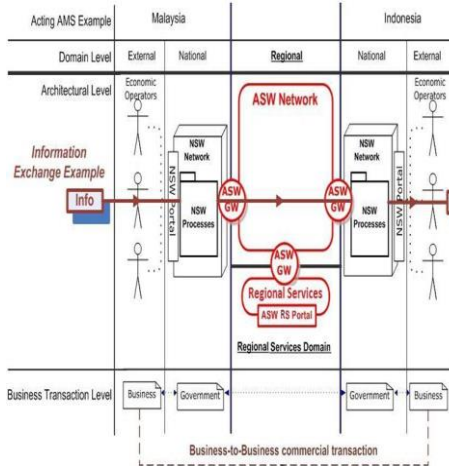


Trading Across Border

Country	Docs for Export (number)	Time for Exports (days)	Cost to Export (US\$ per container)	Docs for Import (number)	Time for Imports (days)	Cost to Import (US\$ per container)
Brunei	6	19	680	6	15	745
Cambodia	9	22	755	10	26	900
Indonesia	4	17	644	7	23	660
Lao PDR	10	26	2140	10	26	2125
Malaysia	5	11	435	6	8	420
Myanmar	N/A	N/A	N/A	N/A	N/A	N/A
Philippines	7	15	585	8	14	660
Singapore	4	5	456	4	4	439
Thailand	5	14	585	5	13	750
Viet Nam	6	21	610	8	21	600

Source: World Bank (2012)

Institutional Connectivity



Source: ASEAN-US TATF, ASW-LWG

National Single Windows (NSWs) and ASEAN Single Window (ASW)

- Substantial but varied progress in most AMS.
- MOU for the ASW Pilot signed (2011).
- NSW fact-finding missions with AMS to review NSW implementation and assess technical assistance needs.



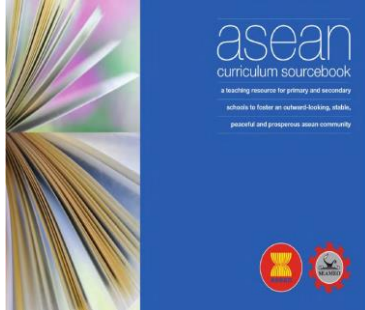
People-to-People Connectivity



Visa Relaxation

- **Progressive visa liberalisation/ exemption for ASEAN nationals**
- **Carry out a study on a common visa for non-ASEAN nationals**
- ASEAN Member States have generally implemented visa-free entry for ordinary passport holders from ASEAN
- ASEAN Immigration Lanes for ASEAN nationals in major international ports of entry in ASEAN being explored

People-to-People Connectivity



ASEAN Curriculum Sourcebook

- Educating primary and secondary school students about ASEAN and what it means for them.

.....

ASEAN Studies Course

- Enhancing educational opportunities

People-to-People Connectivity



ASEAN Virtual Learning Resource Centre (AVLRC)

- Extensive database on ASEAN and ASEAN Member States, particularly its people, culture, history, places of interest and economy.



People-to-People Connectivity



Tourism

- ASEAN Tourism Marketing Strategy endorsed
- ASEAN tourism products being developed in four areas, namely: nature, cultural and heritage, community, and cruise and river-based tourism
- <http://aseantourism.travel/>

People-to-People Connectivity



People Mobility

- Mutual Recognition Arrangements (MRAs): 6 being implemented (Engineering, Architect, Nursing, Tourism, Medical and Dental Practitioners); and the other 2 (Accountancy & Land Surveying) are in the form of Framework MRA to facilitate the actual MRAs in 2+X formula.



Challenges in Implementing MPAC

- Financing large infrastructure requirements
- Communicating MPAC to stakeholders
- Coordinating delivery of MPAC



What are we doing and need to do more to connect the region?

- **R**esource mobilisation through the development of public-private partnerships (PPPs) agenda
- **E**ngagement of ASEAN external partners deepened through dialogue relations and development cooperation
- **A**wareness of stakeholders widened through communications activities/products
- **C**oordination mechanisms being enhanced to improve the convergence of purposes and actions of various work plans at different levels
- **H**armonisation of policies /laws through regulatory reform efforts



