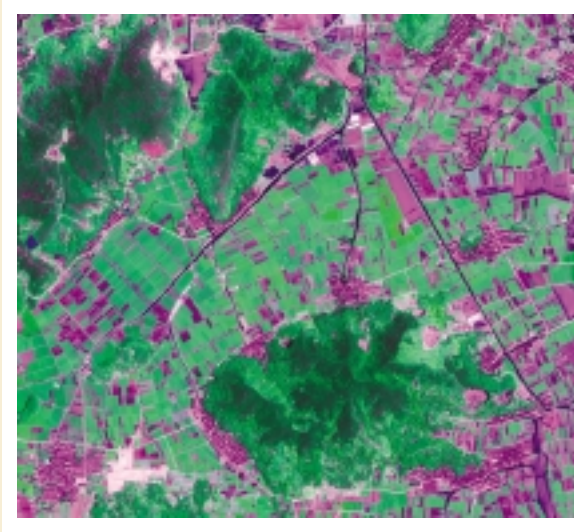


Images of IKONOS





4-meter color image of IKONOS



1-meter panachromatic image of IKONOS



Merge image of IKONOS

This is a group of IKONOS test data. The four meter multi-spectral data can be used to distinguish individual trees, but their detailed information is very much limited. The one meter panchromatic data has rich information about individual trees, but has less spectral information. In the merged image of the two, the texture and spectral information has been effectively enhanced. The differences of tree types and tree conditions can be seen clearly, this means that this kind of data will play positive roles in monitoring forest insects and diseases.