

**MUTUAL RECOGNITION ARRANGEMENT ON CONFORMITY  
ASSESSMENT OF ELECTRICAL AND ELECTRONIC EQUIPMENT**

**APEC EEMRA  
Information Interchange Format**

**PART 1**

## **Introduction**

This format is being prepared to assist member economies participating in the APEC MRA to prepare documentation required for participation in a consistent format.

It is expected that each participating member economy would submit their information in the recommended format to the APEC Secretariat as required by the MRA.

The format is based on the Information Notes on Good Practice for Technical Regulation and therefore provides for information to be supplied for each of the regulatory regimes identified in the notes. There are 7 regimes, they are for products requiring inspection, products requiring licensing, products requiring batch testing, products requiring approval (or certification), products requiring listing or registration, supplier declarations and essential safety requirements. Participating member economies need only provide information relating to the regimes which are in force in their economy. The regimes that are not enforced by the economy need to be noted also, please indicate this by placing 'none' in the standards table on the front of each regime.

Where more than one regulatory system applies within a participating member economy information on each regulatory system should be provided separately.

The format also draws upon the survey on Conformity Assessment of Electrical and Electronic Equipment conducted by the APEC SCSC. The format includes reference to applicable international standards and uses the international convention for describing the relationship of national and international standards, i.e. IDT for identical, MOD for modified, and NEQ for not equal.

When information makes reference to documents or legislation, the documents or legislation should be available on a website for that economy or provided as part of the information supplied to the APEC Secretariat.

## ECONOMY – the People's Republic of China

### APEC EEMRA Information Interchange Format

#### **Contact Points:**

Contact 1. the People's Republic of China

Mr. Shen Jun  
Department for Certification  
Certification and Accreditation Administration of P.R.China  
No.9 Madian East Road, Haidian District, Beijing  
Tel: 86-10-8226 2755  
Fax: 86-10-8226 0772  
E-mail: shenj@cnca.gov.cn

## **PART I – INFORMATION EXCHANGE**

### **Regime Overview**

The Compulsory Product Certification System (hereinafter referred to as CPCS) is applied to products related to human life and health, animals, plants, environmental protection and national security in People's Republic of China.

With regard to CPCS, for import and domestic products, one Catalogue of Products Subject to Compulsory Product Certification (hereinafter referred to as the Catalogue), one set of applicable technical regulations, national standards and conformity assessment procedures, one obligatory mark and one structural fee chart have been announced for statutory implementation.

Any product covered by the Catalogue must first be certified by a certification body designated by relevant competent authorities. From Aug 1, 2003, the Catalogue product must obtain the certificate and be applied the certification mark before it can be marketed, imported or used for any commercial purposes.

Authorized by the State Council, Certification and Accreditation Administration of P. R. China (CNCA) is in charge of nation-wide certification and accreditation activities.

For further information about the Compulsory Product Certification System and CNCA, please visit the website <http://www.cnca.gov.cn/>

### **Legislative References**

<b>Legislation Applicable</b>	<b>Scope of the Legislation</b>	<b>Government Agency</b>
-------------------------------	---------------------------------	--------------------------

The Law of the People's Republic of China on Product Quality	Civil product quality	General Administration for Quality Supervision, Inspection and Quarantine of P. R. China (AQSIQ) Certification and Accreditation Administration of P. R. China (CNCA)
The Law of the People's Republic of China on Import and Export Commodity Inspection	Import and export commodities inspection and certification	AQSIQ CNCA
<b>Regulations of the People's Republic of China on Certification and Accreditation</b>	Certification and Accreditation	CNCA
Regulations on Product Certification	Product certification	AQSIQ CNCA

**1. PRODUCTS REQUIRING INSPECTION**

An inspection regime involves the assessment of each individual product for compliance with technical standards or regulators.

**Nil**

**2. PRODUCTS REQUIRING LICENSING**

Licensing individuals or companies is a conformity assessment regime that assesses the competence of an individual or a company to undertake a specific task.

**Nil**

**3. PRODUCTS REQUIRING BATCH TESTING**

A batch testing regime involves a sample test of each batch or shipment of mass produced product. A batch testing regime may also require initial type testing as a prerequisite.

**Nil**

#### 4. PRODUCTS REQUIRING APPROVAL (OR CERTIFICATION)

An approval regime requires the assessment (type testing) of a sample or samples for compliance with a standard or specification by a “Regulator” or assessment agency recognised by a regulator. In some economies approvals issued by other “Regulators” may be recognised.

Products can not be sold, or imported, until an “approval” is issued for that product.

Products are generally required to be marked or labelled to indicate that they are covered by an approval.

#### Products covered by approvals

Product type or grouping	Regulations	Standards			
		Domestic Standards	Please tick box if mandatory	Relevant International Standards	Extent of Alignment
Residual current protective devices (Portable residual current protective devices, residual current relay)		GB6829	✓	IEC60755	MOD
		JB8755	✓	IEC61540	MOD
		JB8756	✓		
Residual current circuit-breakers without integral over current protection (RCCB)		GB16916.1	✓	IEC61008-1	IDT
		GB16916.21	✓	IEC61008-2-1	IDT
		GB16916.22	✓	IEC61008-2-2	IDT
Residual current circuit-breakers with integral over current protection (RCBO)		GB16917.1	✓	IEC61009-1	IDT
		GB16917.21	✓	IEC61009-2-1	IDT
		GB16917.22	✓	IEC61009-2-2	IDT
Circuit-breakers for over current protection for household and similar installations (MCB)		GB10963	✓	IEC60898	IDT

Fuses		GB13539.1 GB13539.2 GB13539.3 GB13539.4 GB13539.5	✓ ✓ ✓ ✓ ✓	IEC60269-1 IEC60269-2 IEC60269-3 IEC60269-4 IEC60269-3-1	MOD MOD IDT MOD IDT
Circuit-breakers		GB14048.2 GB17701	✓ ✓	IEC60947-2 IEC60934	MOD IDT
Low-voltage switch		GB14048.3	✓	IEC60947-3	MOD
Other protective devices for circuits		GB14048.2 GB14048.4	✓ ✓	IEC60947-2 IEC60947-4-1	MOD MOD
Relays		GB14048.5	✓	IEC60947-5-1	MOD
Other switches		GB14048.2 GB14048.3 GB14048.4 GB14048.5 GB/T14048.10	✓ ✓ ✓ ✓	IEC60947-2 IEC60947-3 IEC60947-4-1 IEC60947-5-1 IEC60947-5-2	MOD MOD MOD MOD IDT
Other devices		GB14048.5 GB14048.4 GB14048.6 GB17885 GB14048.9	✓ ✓ ✓ ✓ ✓	IEC60947-5-1 IEC60947-4-1 IEC60947-4-2 IEC61095 IEC60947-6-2	MOD MOD IDT IDT IDT
Low-voltage switch-gear and control-gear assemblies		GB7251.1 GB7251.2 GB7251.3 GB7251.4 GB7251.5	✓ ✓ ✓ ✓ ✓	IEC60439-1 IEC60439-2 IEC60439-3 IEC60439-4: IEC60439-5	IDT IDT IDT IDT IDT
Small-power motors		GB12350 GB14711			



Electric drills, impact drills		GB3883.6 GB3883.1 GB4343 GB17625.1	✓ ✓ ✓ ✓	IEC60745-2-1 + A1 IEC60745-1 CISPR14 IEC61000-3-2	<b>IDT</b> <b>IDT</b> <b>MOD</b> <b>MOD</b>
Electric screwdrivers and impact wrenches		GB3883.2 GB3883.1 GB4343 GB17625.1	✓ ✓ ✓ ✓	IEC60745-2-2 + A1 IEC60745-1 CISPR14 IEC61000-3-2	<b>IDT</b> <b>IDT</b> <b>MOD</b> <b>MOD</b>
Electric grinders, polishers and disk-sanders		GB3883.3 GB3883.1 GB4343 GB17625.1	✓ ✓ ✓ ✓	IEC60745-2-3 + A1 IEC60745-1 CISPR14 IEC61000-3-2	<b>IDT</b> <b>IDT</b> <b>MOD</b> <b>MOD</b>
Electric sanders		GB3883.4 GB3883.1 GB4343 GB17625.1	✓ ✓ ✓ ✓	IEC60745-2-4 +A1 + A2 IEC60745-1 CISPR14 IEC61000-3-2	<b>IDT</b> <b>IDT</b> <b>MOD</b> <b>MOD</b>
Electric circular saws		GB3883.5 GB3883.1 GB4343 GB17625.1	✓ ✓ ✓ ✓	IEC60745-2-5 IEC60745-1 CISPR14 IEC61000-3-2	<b>IDT</b> <b>IDT</b> <b>MOD</b> <b>MOD</b>
Electric hammers, rotary hammers		GB3883.7 GB3883.1 GB4343 GB17625.1	✓ ✓ ✓ ✓	IEC60745-2-6 + A1 IEC60745-1 CISPR14 IEC61000-3-2	<b>IDT</b> <b>IDT</b> <b>MOD</b> <b>MOD</b>

Electric spray guns for non-flammable liquid		GB3883.13 GB3883.1 GB4343 GB17625.1	✓ ✓ ✓ ✓	IEC60745-2-7 IEC60745-1 CISPR14 IEC61000-3-2	<b>IDT</b> <b>IDT</b> MOD MOD
Electric sheet metal shears and nibblers		GB3883.8 GB3883.1 GB4343 GB17625.1	✓ ✓ ✓ ✓	IEC60745-2-8 + A1 IEC60745-1 CISPR14 IEC61000-3-2	<b>IDT</b> <b>IDT</b> MOD MOD
Electric tappers		GB3883.9 GB3883.1 GB4343 GB17625.1	✓ ✓ ✓ ✓	IEC60745-2-9 IEC60745-1 CISPR14 IEC61000-3-2	<b>IDT</b> <b>IDT</b> MOD MOD
Electric reciprocating saws (jig saws and sabre saws)		GB3883.11 GB3883.1 GB4343 GB17625.1	✓ ✓ ✓ ✓	IEC60745-2-11 IEC60745-1 CISPR14 IEC61000-3-2	<b>IDT</b> <b>IDT</b> MOD MOD
Electric concrete vibrators (internal vibrators)		GB3883.12 GB3883.1 GB4343 GB17625.1	✓ ✓ ✓ ✓	IEC60745-2-12 + A1 IEC60745-1 CISPR14 IEC61000-3-2	<b>IDT</b> <b>IDT</b> MOD MOD
Electric chain saws		GB3883.14 GB3883.1 GB4343 GB17625.1	✓ ✓ ✓ ✓	IEC60745-2-13 + A1 IEC60745-1 CISPR14 IEC61000-3-2	<b>IDT</b> <b>IDT</b> MOD MOD

Electric planers		GB3883.10 GB3883.1 GB4343 GB17625.1	✓ ✓ ✓ ✓	IEC60745-2-14 IEC60745-1 CISPR14 IEC61000-3-2	IDT IDT MOD MOD
Electric hedge trimmers and electric grass shears		GB3883.15 GB3883.1 GB4343 GB17625.1	✓ ✓ ✓ ✓	IEC60745-2-15 IEC60745-1 CISPR14 IEC61000-3-2	IDT IDT MOD MOD
Electric routers and edge trimmers		GB3883.17 GB3883.1 GB4343 GB17625.1	✓ ✓ ✓ ✓	IEC60745-2-17 IEC60745-1 CISPR14 IEC61000-3-2	IDT IDT MOD MOD
Electric marble cutters		GB3883.18 GB3883.1 GB4343 GB17625.1	✓ ✓ ✓ ✓	IEC60745-1 CISPR14 IEC61000-3-2	IDT MOD MOD
Portable A.C arc welding machines		JB3643-2000	✓		
A.C. Arc welding machines		GB15579-1995	✓	IEC60974-1:1989	IDT
D.C. Arc welding machines		GB/T8118-1995			
TIG welding machines					
MIG/MAG welding machines					
Submerged arc welding machine					
Plasma arc cutting machines		GB15579-1995	✓	IEC60974-1:1989	IDT
Plasma arc welding equipment		GB/T8118-1995			

Electric shock protective devices for arc welding transformer		GB10235-2000	√		
Coupling devices for welding cables		GB15579.12-1998	√	IEC60974-12:1992	IDT
Resistance welding machine		GB15578-1995	√		
Wire feeder for welders		JB/T9533-1999			
TIG welding blow lamp		JB/T9526-1999			
MIG/MAG welding torches		JB/T9532-1999			
Electrode holders		GB15579.11-1998	√	IEC60974-11:1992	IDT
Household refrigerators, food freezers		GB4706.1 GB4706.13 GB4343 GB17625.1	√ √ √ √	IEC60335-1:1976,+A1~A6 IEC60355-2-24:1992 CISPR14:1993 IEC61000-3-2:1995	MOD IDT MOD MOD
Electric fans		GB 4706.1 GB 4706.27 GB4343 GB17625.1	√ √ √ √	IEC60335-1:1976+A1~A6 IEC60342-1:1981 CISPR14:1993 IEC61000-3-2:1995	MOD IDT MOD MOD
Air-conditioners		GB 4706.1 GB 4706.32 GB4343 GB17625.1	√ √ √ √	IEC60335-1:1976+A1~A6 IEC60335-2-40:1992 CISPR14:1993 IEC61000-3-2:1995	MOD IDT MOD MOD
Motor-compressors		GB4706.1 GB4706.17	√ √	IEC60335-1:1976+A1~A6 IEC60335-2-34:1980	MOD IDT

Household electric washing machines	GB4706.1 GB4706.24 GB4706.20 GB4706.26  GB4343 GB17625.1	✓ ✓ ✓ ✓  ✓ ✓	IEC60335-1:1991+A1 IEC60335-2-7:1993 IEC60335-2-11:1993 IEC60335-2-4:1993  CISPR14:1993 IEC61000-3-2:1995	MOD MOD IDT MOD MOD MOD
Storage water heater	GB4706.1 GB4706.12	✓ ✓	IEC60335-1:1976+A1~A6 IEC60335-2-21:1989	MOD IDT
Room heaters	GB4706.1 GB4706.23	✓ ✓	IEC60335-1:1976+A1~A6 IEC60335-2-30:1990	MOD IDT
Vacuum cleaners	GB4706.1 GB4706.7 GB4343 GB17625.1	✓ ✓ ✓ ✓	IEC60335-1:1991+A1 IEC60335-2-2:1993 CISPR14:1993 IEC61000-3-2:1995	MOD IDT MOD MOD
Appliances for skin and hair care	GB4706.1 GB4706.15 GB4343 GB17625.1	✓ ✓ ✓ ✓	IEC60335-1:1976+A1~A6 IEC60335-2-23:1986 CISPR14:1993 IEC61000-3-2:1995	MOD IDT MOD MOD
Instantaneous water heaters	GB4706.1 GB4706.11	✓ ✓	IEC60335-1:1976+A1~A6 IEC60335-2-35:1982	MOD IDT
Electric irons	GB4706.1 GB4706.2 GB4343 GB17625.1	✓ ✓ ✓ ✓	IEC60335-1:1976+A1~A6 IEC60335-2-3:1986 CISPR14:1993 IEC61000-3-2:1995	MOD IDT MOD MOD

Electromagnetic cookers		GB4706.1 GB4706.29	✓ ✓	IEC60335-1:1976+A1~A6	MOD
Roasters		GB4706.1 GB4706.14	✓ ✓	IEC60335-1:1991+A1 IEC60335-2-9:1993	MOD IDT
Electric food processors		GB4706.1 GB4706.30	✓ ✓	IEC60335-1:1976+A1~A6 IEC60335-2-14:1984	MOD MOD
Microwave ovens		GB4706.1 GB4706.21	✓ ✓	IEC60335-1:1996+A1~A6 IEC60335-2-25:1993	MOD IDT
Cooking ranges, hobs, ovens and similar appliances		GB4706.1 GB4706.22	✓ ✓	IEC60335-1:1976+A1~A6 IEC60335-2-6:1986	MOD MOD
Range hoods		GB4706.1 GB4706.28	✓ ✓	IEC60335-1:1991+A1 IEC60335-2-31:1995	MOD IDT
Appliances for heating liquids		GB4706.1 GB4706.19	✓ ✓	IEC60335-1:1991+A1 IEC60335-2-15:1995	MOD IDT
Electric rice cookers		GB4706.1 GB4706.19 GB4343 GB17625.1	✓ ✓ ✓ ✓	IEC60335-1:1976+A1~A6 IEC60335-2-15:1995 CISPR14:1993 IEC61000-3-2:1995	MOD IDT MOD MOD
Water dispensers		GB4706.1 GB4706.19	✓ ✓	IEC60335-1:1991,+A1 IEC60335-2-15:1995	MOD IDT
Powered sound boxes having single speakers with the max output sound power under 500W (R.M.S.)		GB8898	✓	IEC60065 5 <sup>th</sup> +A1+A2+A3	MOD
		GB13837	✓	CISPR13	MOD
		GB17625.1	✓	IEC61000-3-2	MOD
Powered sound boxes having multiple speakers with the max output sound power under 500W (R.M.S.)					
Audio power amplifier					

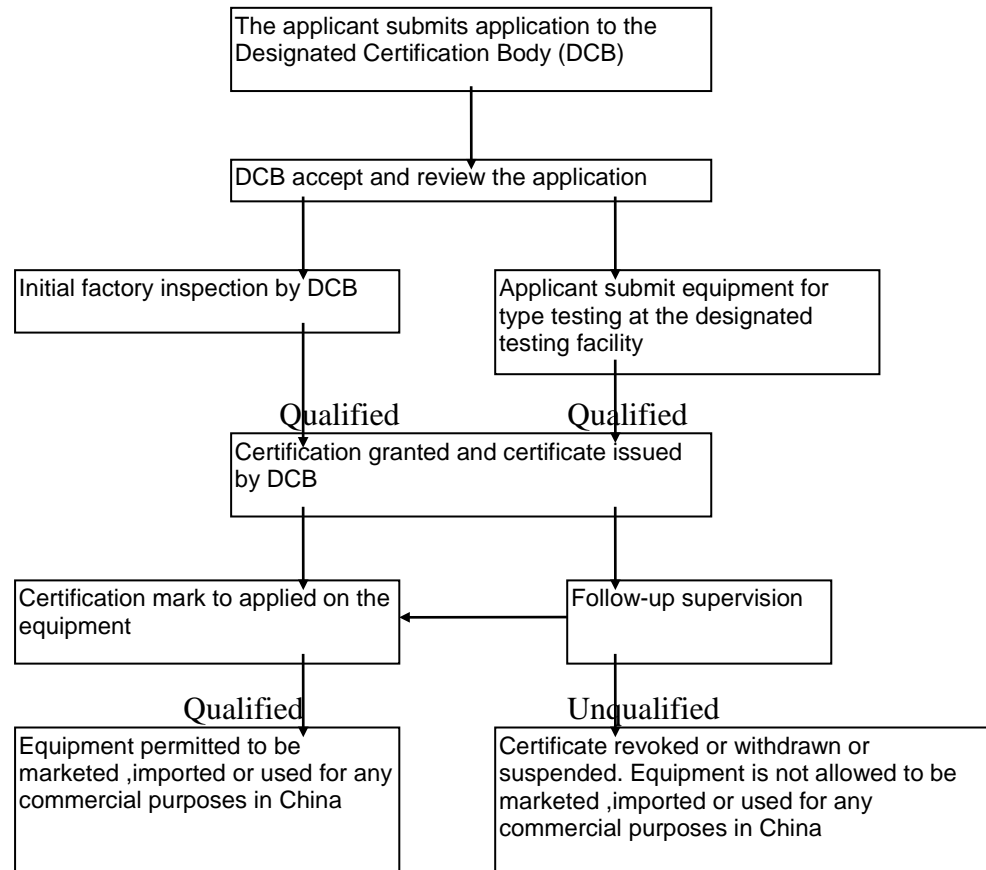
Tuners、 Radio receivers					
Recorders, players, dealers for audio and video with kinds of carrier media					
Component sound/vision systems					
Power adapters for audio/video products					
Color television receivers and display monitors with kinds of display modes		GB8898 GB13837 GB17625.1	√	IEC60065 5 <sup>th</sup> +A1+A2+A3	MOD
			√	CISPR13	MOD
			√	IEC61000-3-2	MOD
B/W television receivers and other monochrome television receivers and display monitors					
Television-antenna amplifiers		GB8898 GB13836	√	IEC60065 5 <sup>th</sup> +A1+A2+A3	MOD
			√	IEC60728-2	MOD
Picture/display tubes		GB8898	√	IEC60065 5 <sup>th</sup> +A1+A2+A3	MOD
Video recorders		GB8898	√	IEC60065 5 <sup>th</sup> +A1+A2+A3	MOD
Electronic organs		GB13837 GB17625.1	√	CISPR13	MOD
			√	IEC61000-3-2	MOD
Satellite television receivers		GB13837 GB17625.1	√	CISPR13	MOD
			√	IEC61000-3-2	MOD
Equipment and parts for cable distribution systems of sound and television signals		GB13837 GB17625.1	√	CISPR13	MOD
			√	IEC61000-3-2	MOD
Microcomputers, Portable personal computers		GB4943 GB9254 GB17625.1	√	IEC60950 2 <sup>nd</sup>	MOD
			√	CISPR22	IDT
			√	IEC61000-3-2	MOD
Display units with monochrome, colour		GB4943	√	IEC60950 2 <sup>nd</sup>	MOD

connected with computer, display terminals, liquid crystal displays (not including display screen of LCD), projector with video data, projection displays etc	GB9254 GB17625.1	✓	CISPR22	IDT
		✓	IEC61000-3-2	MOD
Printers connected with computer	GB4943 GB9254 GB17625.1	✓	IEC60950 2 <sup>nd</sup>	MOD
		✓	CISPR22	IDT
		✓	IEC61000-3-2	MOD
Switching power supply units for computer and adapters, Chargers	GB4943 GB9254 GB17625.1	✓	IEC60950 2 <sup>nd</sup>	MOD
		✓	CISPR22	IDT
		✓	IEC61000-3-2	MOD
Computer game players	GB4943	✓	IEC60950 2 <sup>nd</sup>	MOD
Learning machine				
Duplicators	GB4943	✓	IEC60950 2 <sup>nd</sup>	MOD
Servers	GB9254 GB17625.1	✓	CISPR22	IDT
		✓	IEC61000-3-2	MOD
Finance and trade settlement equipment	GB4943 GB9254	✓	IEC60950 2 <sup>nd</sup>	MOD
		✓	CISPR22	IDT
	GB9254	✓	CISPR22	IDT
Luminaries	GB7000.1	✓	IEC60598-1:1992	IDT
	GB7000.12	✓	IEC60598-2-2:1997	IDT
	GB17743	✓	CISPR15:1996	MOD
	GB17625.1	✓	IEC61000-3-2:1995	MOD



	GB7000.1 GB7000.10 GB17743 GB17625.1	✓ ✓ ✓ ✓	IEC60598-1:1992 IEC60598-2-1:1979,+A1:1987 CISPR15:1996 IEC61000-3-2:1995	IDT IDT MOD MOD
	GB7000.1 GB7000.11 GB17743 GB17625.1	✓ ✓ ✓ ✓	IEC60598-1:1992 IEC60598-2-4:1997 CISPR15:1996 IEC61000-3-2:1995	IDT IDT MOD MOD
Ballasts	GB2313 GB17743 GB17625.1	✓ ✓ ✓	IEC60920:1990 CISPR15:1996 IEC61000-3-2:1995	IDT MOD MOD
	GB15143 GB17743 GB17625.1	✓ ✓ ✓	IEC60928:1990 CISPR15:1996 IEC61000-3-2:1995	IDT MOD MOD
	GB14045 GB17743 GB17625.1	✓ ✓ ✓	IEC60922:1989 CISPR15:1996 IEC61000-3-2:1995	MOD MOD MOD

**Diagrammatic representation or flowchart of the regime**



## Description of the Regime

### Testing Facilities

No.	Name of Testing facility	Certification Implement Rules for Product in the Designated Business Scope	Address and Communication
1.	China Electronics Standardization Institute (CESI) Safety and EMC Testing Center of Electronic Industry	CNCA—01C—001: Electric Wire and Cable Categories: Cord Sets CNCA—01C—003: Switches for Circuit, Installation Protective and Connection Devices: Plugs and Socket- Outlets for Household and Similar General Purpose CNCA—01C—006: Switches for Circuit, Installation Protective and Connection Devices: Appliance Couplers for Household and Similar General Purpose CNCA—01C—007: Switches for Circuit, Installation Protective and Connection Devices: Thermal-Links CNCA—01C—009: Switches for Circuits, Installation Protective and Connection Devices: Cartridge Fuse-Links of Miniature Fuses CNCA—01C—017: Audio & Video Products CNCA—01C—019: Audio and Video Apparatus: Satellite Television Receivers (EMC)	No.1 andingmen Dongda Jie, Beijing, P. R. China Postal Code:10007 Tel: 010-84029113 Contact Person: Mr. Hu Jingping

		<p>CNCA—01C—020: Information Technology Equipments</p> <p>CNCA—01C—021: Information Technology Equipments: Finance and Trade Settlement Equipment (EMC)</p> <p>CNCA—07C—031: Telecommunication Terminal Equipment</p>	
2.	<p><b>The Third Electronic Research Institute of Ministry of Information Industry</b> (National Testing and Inspection Center for Radio and TV Products)</p>	<p>CNCA—01C—001: Electric Wire and Cable Categories: Cord Sets</p> <p>CNCA—01C—003: Switches for Circuit, Installation Protective and Connection Devices: Plugs and Socket- Outlets for Household and Similar General Purpose</p> <p>CNCA—01C—004: Switches for Circuits, Installation Protective and Connection Devices: Switches for Household and Similar Fixed-Electrical Installations</p> <p>CNCA—01C—006: Switches for Circuit, Installation Protective and Connection Devices: Appliance Couplers for Household and Similar General Purpose</p> <p>CNCA—01C—007: Switches for Circuit, Installation Protective and Connection Devices: Thermal-Links</p> <p>CNCA—01C—009: Switches for Circuits, Installation Protective and Connection Devices: Cartridge Fuse-Links of Miniature Fuses</p> <p>CNCA—01C—017: Audio &amp; Video Products</p>	<p>No.7B Jiuxianqiao Beilu, Chaoyang District, Beijing, P.R. China Postal Code:100015 Tel: +86-10-64376357 Contact Person: Mr. Tang Wei</p>

		<p>CNCA—01C—018: Audio and Video Apparatus: Equipment and Components for Cable Distribution Systems of Sound and Television Signals (EMC)</p> <p>CNCA—01C—019: Audio and Video Apparatus: Satellite Television Receivers (EMC)</p> <p>CNCA—01C—020: Information Technology Equipments</p> <p>CNCA—01C—021: Information Technology Equipments: Finance and Trade Settlement Equipment (EMC)</p>	
3.	The Shanghai Institute of Standards and Metrology and Testing for Electronic Products and Instruments	<p>CNCA—01C—009: Switches for Circuits, Installation Protective and Connection Devices: Cartridge Fuse-Links of Miniature Fuses</p> <p>CNCA—01C—007: Switches for Circuit, Installation Protective and Connection Devices: Thermal-Links</p> <p>CNCA—01C—017: Audio &amp; Video Products</p> <p>CNCA—01C—020: Information Technology Equipments</p>	<p>No.627 Yongjia Road, Shanghai, P.R. China</p> <p>Postal Code:200031</p> <p>Tel: 021-64335275</p> <p>Fax: 021-64312574</p> <p>Contact Person: Mr. Du Songgen</p>
4.	China CEPREI (Headquarters) Laboratory	<p>CNCA—01C—003: Switches for Circuit, Installation Protective and Connection Devices</p> <p>Plugs and Socket-Outlets for Household and Similar General Purpose</p> <p>CNCA—01C—006: Switches for Circuit, Installation Protective and Connection Devices</p> <p>Appliance Couplers for Household and Similar General</p>	<p>No.110 Dongguanzhuang Road, Tianhe District, Guangzhou 510610,P.R. China</p> <p>Tel: +86-20-87237006/ +86-20-87237177</p> <p>Fax: +86-20-87236171</p> <p>Contact Person: Mr. Chen Lihui</p>

		<p>Purpose</p> <p>CNCA—01C—007: Switches for Circuit, Installation Protective and Connection Devices: Thermal-Links</p> <p>CNCA—01C—017: Audio &amp; Video Products</p> <p>CNCA—01C—020: Information Technology Equipments</p>	
5.	Guangzhou Testing and Inspection Institute for Household Electrical Appliances (GTIHEA)	<p>CNCA—01C—001: Electric Wire and Cable Categories Cord Sets</p> <p>CNCA—01C—003: Switches for Circuit, Installation Protective and Connection Devices</p> <p>Plugs and Socket-Outlets for Household and Similar General Purpose</p> <p>CNCA—01C—004: Switches for Circuits, Installation Protective and Connection Devices</p> <p>Switches for Household and Similar Fixed-Electrical Installations</p> <p>CNCA—01C—005: Switches for Circuit, Installation Protective and Connection Devices</p> <p>Plugs and Socket-Outlets for Industrial Purpose</p> <p>CNCA—01C—006: Switches for Circuit, Installation Protective and Connection Devices</p> <p>Appliance Couplers for Household and Similar General</p>	<p>No.204,Xingang West Road, Guangzhou, Guangdong Province, P.R. China</p> <p>Postal Code:510302</p> <p>Tel: +86-20-84451692</p> <p>Fax: +86-20-84183160</p> <p>Contact Person: Mr. Xue Shouren</p>

	<p>Purpose</p> <p>CNCA—01C—007: Switches for Circuit, Installation Protective and Connection Devices</p> <p>Thermal-Links</p> <p>CNCA—01C—008: Switches for Circuits, Installation Protective and Connection Devices</p> <p>Enclosures for Accessories for Household and Similar Fixed Electric Installations</p> <p>CNCA—01C—009: Switches for Circuits, Installation Protective and Connection Devices</p> <p>Cartridge Fuse-Links of Miniature Fuses</p> <p>CNCA—01C—013: Small-Power Motor</p> <p>CNCA—01C—015: Electric Welding Machines</p> <p>CNCA—01C—016: Household and Similar Use Appliances</p> <p>CNCA—01C—022: Lighting Electrical Appliances</p>	
--	---	--

6.	Beijing Testing Institution for Household Electrical Appliances	<p>CNCA—01C—003: Switches for Circuit, Installation Protective and Connection Devices Plugs and Socket-Outlets for Household and Similar General Purpose</p> <p>CNCA—01C—004: Switches for Circuits, Installation Protective and Connection Devices Switches for Household and Similar Fixed-Electrical Installations</p> <p>CNCA—01C—006: Switches for Circuit, Installation Protective and Connection Devices Appliance Couplers for Household and Similar General Purpose</p> <p>CNCA—01C—013: Small-Power Motor</p> <p>CNCA—01C—014: Electric Tools</p> <p>CNCA—01C—016: Household and Similar Use Appliances</p> <p>CNCA—01C—022: Lighting Electrical Appliances</p>	<p>No.29 Xiaxie Jie, Xuanwu District, Beijing Postal Code:100053 Tel: 010-83157989 Contact Person: Ms. Zhang Shaoping</p>
7.	Beijing Electrical Research Institute for Technique and Economy of Machinery Industry. ( Ministry of Machine Building Industry Electrical Wire & Cable Quality Testing and Inspection Center <Beijing> )	<p>CNCA—01C—002: Electric Wire and Cable Categories Electric Wires &amp; Cables (CABL)</p> <p>CNCA—01C—003: Switches for Circuit, Installation Protective and Connection Devices Plugs and Socket-Outlets for Household and Similar General Purpose</p>	<p>No.2 Cuiwei Road Beijing China. Postal Code:100036 Tel:010-68157833/68157734 Contact Person: Mr. Xi Dehao</p>



8.	Shanghai Electric Cable Research Institute ( China National Center for Quality Supervision and Test of Electric Wire and Cable )	<p>CNCA—01C—001: Electric Wire and Cable Categories Cord Sets</p> <p>CNCA—01C—002: Electric Wire and Cable Categories Electric Wires &amp; Cables (CABL)</p> <p>CNCA—01C—003: Switches for Circuit, Installation Protective and Connection Devices Plugs and Socket-Outlets for Household and Similar General Purpose</p>	<p>1000 Jun Gong Road Shanghai, 200093 China Tel: 86-21-65494605 Fax: 86-21-65490171 Contact Person: Mr. Yuan Baifen</p>
9.	Shanghai Testing & Inspection Institute for Electrical Equipment (STIEE)	<p>CNCA—01C—010: Low-Voltage Electrical Apparatus Low-Voltage Switchgear Assembly</p> <p>CNCA—01C—011: Low-Voltage Electrical Apparatus Switch and Control Equipment</p> <p>CNCA—01C—012: Low-Voltage Electrical Apparatus Installation Protective Equipment</p> <p>CNCA—01C—013: Small-Power Motor</p>	<p>505 Wu Ning Road Shanghai P.R. China Postal Code:200063 Tel: 86-21-62574990-623 Fax: 86-21-62435543 Contact Person: Mr.Wan Liyuan Mr.Chen Weihua</p>
10.	Chengdu Electrical Appliance Inspection Institute	CNCA—01C—015: Electric Welding Machines	<p>No.29 Dongyiduan, Erhuan Riad, Chengdu Postal Code:610051 Tel: 028-3252866 Contact Person: Mr. Yang Qingxuan</p>
11.	Shanghai Testing & Inspection Institute for Electrical Appliances	<p>CNCA—01C—013: Small-Power Motor</p> <p>CNCA—01C—014: Electric Tools</p>	<p>No.10 Bao Qing Road, Shanghai, P.R. China Postal Code:200031 Tel: 86-21-64378405</p>

			Mr. Huang Tao
12.	China Light Test Laboratory (Beijing)	CNCA—01C—022: Lighting Electrical Appliances	Chaoyang District Dabeyao Changpocun, Jia No.3 Beijing Postal Code:100022 Tel: 010-67746544 Contact Person: Ms. Chen Yanqing
13.	China National Lighting Fitting Quality Supervision Testing Center (CLTC) (Shanghai))	CNCA—01C—022: Lighting Electrical Appliances	75 Bei Baoxing Rd. Shanghai 200083 Tel:021-56383662 021-36033443 Fax: 8621-56381793 Contact Person: Mr. Yu, Licheng
14.	China Telecommunication Technology Labs	CNCA—07C—031: Telecommunication Terminal Equipment	No.11 Yue Tan Nan Jie Beijing, China. Postal Code:100045 Tel: 010-68094320 Contact Person: Mr.Jiang Jinxin
15.	Telecommunication Metrology Center of M.I.I.	CNCA—07C—031: Telecommunication Terminal Equipment	No. 52 Huayuanbei Rode,Beijing, P.R.China Postal Code:100083 Tel: 010-62301646/62304133 Fax: 01062304133 Contact Person: Mr. Xie Yi
16.	Testing & Inspection for Special Appliance Shanghai Scientific Research Institute of Labor Protection	CNCA—01C—012: Low-Voltage Electrical Apparatus Installation Protective Equipment	No.191, Tianlin Road, Shanghai Postal Code:200233 Tel: 021-64853353 Contact Person: Mr. Song Zhiming

17.	Shanghai Electrical Appliance Testing Laboratory (SEATL)	CNCA—01C—013: Small-Power Motor CNCA—01C—014: Electric Tools CNCA—01C—016: Household and Similar Use Appliances	1208 Minsheng Road, Pudong New Area, Shanghai, P. R. China Postal Code:200135 Tel: (8621) 6856 6965 Fax: (8621) 6856 9399 Contact Person: Mr. Xu Sheng
18.	Technical Center of Zhejiang Inspection and Quarantine	CNCA—01C—014: Electric Tools CNCA—01C—016: Household and Similar Use Appliances	No 99, East Fengqi Road, Hangzhou, P. R. China Postal Code:310020 Tel:+86-571-86098022, 86094444, 86093711 Fax: 86091933 Contact Person: Mr. Zhou Min
19.	Jiangsu CIQ Mechanical& Electrical Products Testing Center	CNCA—01C—014: Electric Tools CNCA—01C—016: Household and Similar Use Appliances CNCA—01C—022: Lighting Electrical Appliances	10 Huaxia Road (M), Dongting Town, Xishan District, Wuxi City, Jiangsu Province, P.R. China Postal Code:214101 Tel: 0510-8203737-114 0510-8701058 Contact Person: Mr. Deng Wei
20.	Shenzhen Entry-Exit Inspection and Quarantine Bureau Testing and Technology Center for Industrial Products	CNCA—01C—016: Household and Similar Use Appliances CNCA—01C—017: Audio & Video Products	No. 1011 Fuqiang Road, Futian, Shenzhen, Guangdong, P.R. China Tel: 0755-3395999-1210 Postal Code:518045 Contact Person: Mr.Liu Zehua

21.	Testing Center for Electronics Products & Electrical Appliances of Shenyang Entry-Exit Inspection and Quarantine Bureau	CNCA—01C—016: Household and Similar Use Appliances	No.169 Qingnian Street, Shenhe District, Shenyang, Liaoning,P.R. China Postal code: 110015 Tel: 0086-24-23925106 0086-24-2892468 Fax: 0086-24-23841628 0086-24-24192178 Contact Person: Mr.Sun Wen
22.	Shenzhen Electronic Product Quality Testing Center	CNCA—01C—017: Audio & Video Products CNCA—01C—020: Information Technology Equipments	Building 409,Huafa Road Shenzhen China P.O.Box: 3-843, Shenzhen China Postal Code:518031 Tel: 0755-3351572 Fax: 0755-3351569 Contact Person: Mr. Du Jinsheng
23.	Electric Safety Laboratory of Guangzhou Entry-Exit Inspection & Quarantine Bureau	CNCA—01C—016: Household and Similar Use Appliances	Floor9, Building B No. 66 Huacheng Avenue, Zhujiang Xincheng, Guangzhou Postal Code:510623 Tel: 020-38290475 Fax: 020-38290490 Contact Person: Mr. Wang Bo
24.	Guangzhou Electrical Safety Testing Institute of China State Bureau of Quality and Technical Supervision	CNCA—01C—002: Electric Wire and Cable Categories Electric Wires & Cables (CABL) CNCA—01C—010: Low-Voltage Electrical Apparatus Low-Voltage Switchgear Assembly	3rd Tai Shan Miao Qian, Nan Cun Road, Haizhu District, P.R. China Postal Code:510220 Tel: 020-84494119 Contact Person: Mr. Gong Bin

		<p>CNCA—01C—011: Low-Voltage Electrical Apparatus Switch and Control Equipment</p> <p>CNCA—01C—012: Low-Voltage Electrical Apparatus Installation Protective Equipment</p> <p>CNCA—01C—014: Electric Tools</p> <p>CNCA—01C—016: Household and Similar Use Appliances</p> <p>CNCA—01C—022: Lighting Electrical Appliances</p>	
25.	Nim-Njtu United Lab for Electromagnetic Compatibility	<p>CNCA—01C—018: Audio and Video Apparatus Equipment and Components for Cable Distribution Systems of Sound and Television Signals (EMC)</p> <p>CNCA—01C—019: Audio and Video Apparatus Satellite Television Receivers (EMC)</p> <p>CNCA—01C—021: Information Technology Equipments Finance and Trade Settlement Equipment (EMC)</p>	<p>No.18 Bei Sanhuan Donglu Beijing, P.R. China Postal Code:100013 Tel: +86 10 64276009, +86 10 51688096 Contact Person: Mr.Yang Shengxiang</p>
26.	Zhejiang Institute of Calibration and Testing for Qualitative Technical Supervision	CNCA—01C—014: Electric Tools	<p>222 Tianmushan Road, Hangzhou, P.R. China Postal Code:310013 Tel. : 0086-571-85127673 Contact Person : Mr.Deng Zhongyun</p>
27.	Fujian Provincial Central Inspection Institute	<p>CNCA—01C—002: Electric Wire and Cable Categories Electric Wires &amp; Cables (CABL)</p>	<p>No. Shantoujiao West Yang Qiao Road Fuzhou Fujian, P.R. China Postal Code:350002</p>

		<p>CNCA—01C—010: Low-Voltage Electrical Apparatus Low-Voltage Switchgear Assembly</p> <p>CNCA—01C—011: Low-Voltage Electrical Apparatus Switch and Control Equipment</p> <p>CNCA—01C—013: Small-Power Motor</p> <p>CNCA—01C—017: Audio &amp; Video Products</p> <p>CNCA—01C—020: Information Technology Equipments</p>	<p>Tel: 0086-591-3710867 Fax: 0086-591-3710867 Contact Person: Mr. Wei Min</p>
28.	Shanghai Institute of Supervision & Testing on Product Quality	CNCA—01C—022: Lighting Electrical Appliances	<p>NO.381 Cangwu Rd., Shanghai, P.R.China Postal Code:200233 Tel: (8621)64850058 Fax: (8621)64851832 Contact Person: Mr. Chen Guoping</p>
29.	Sichuan Province Product Quality Supervision & Inspection Institute	<p>CNCA—01C—017: Audio &amp; Video Products</p> <p>CNCA—01C—022: Lighting Electrical Appliances</p>	<p>No. 2 Dongmen Street, Chengdu, P.R. China Postal Code:610031 Tel: 0086-28-6264749 0086-28-6262955 Fax: 0086-28-6251086 Contact Person: Mr. Li Shanqiao</p>
30.	Chengdu Product Quality Supervision Inspection Institute	<p>CNCA—01C—002: Electric Wire and Cable Categories Electric Wires &amp; Cables (CABL)</p> <p>CNCA—01C—010: Low-Voltage Electrical Apparatus Low-Voltage Switchgear Assembly</p>	<p>16 Yongfeng Road, Chengdu,P.R. China Postal Code:610041 Tel: 0086-28-85180929, 85183820 Fax:</p>

			0086-28-85189854 Contact Person: Mr. Ye Yuan Ming
31.	Shenzhen Academe of Metrology and Quality Inspection	<p>CNCA—01C—002: Electric Wire and Cable Categories Electric Wires &amp; Cables (CABL)</p> <p>CNCA—01C—003: Switches for Circuit, Installation Protective and Connection Devices</p> <p>Plugs and Socket-Outlets for Household and Similar General Purpose</p> <p>CNCA—01C—016: Household and Similar Use Appliances</p> <p>CNCA—01C—017: Audio &amp; Video Products</p> <p>CNCA—01C—020: Information Technology Equipments</p> <p>CNCA—01C—021: Information Technology Equipments Finance and Trade Settlement Equipment (EMC)</p> <p>CNCA—07C—031: Telecommunication Terminal Equipment</p>	<p>Bldg. of Shenzhen Academy of Metrology and Quality Inspection, Longzhu Road, Nanshan, Shenzhen, China Postal Code:518055 Tel: 0755-6941608 Contact Person: Mr. Yang Wanying</p>
32.	Dalian Institute of Product Inspection & Supervision	<p>CNCA—01C—002: Electric Wire and Cable Categories Electric Wires &amp; Cables (CABL)</p> <p>CNCA—01C—010: Low-Voltage Electrical Apparatus Low-Voltage Switchgear Assembly</p>	<p>68-2Wansui, Shahekou, Dalian, Liaoning,P.R. China Postal Code: 116021 Tel:0411-4603949 Contact Person: Mr.Zheng Shunli</p>
33.	Shandong Institute of Metrology	CNCA—01C—016: Household and Similar Use Appliances	<p>28 Qianfoshan East Road,Jinan, P.R.China Postal Code:250014 Tel: 0531-2966533</p>

			Fax: 0531-2964412 Contact Person: Mr. Jiang Yanbo
34.	Shandong Provincial Susupervision & Inspection Institute for Product Quality	CNCA—01C—010: Low-Voltage Electrical Apparatus Low-Voltage Switchgear Assembly CNCA—01C—011: Low-Voltage Electrical Apparatus Switch and Control Equipment CNCA—01C—012: Low-Voltage Electrical Apparatus Installation Protective Equipment	No.81 Shandabei Road, Jinan, Shandong Postal Code:250100 Tel: 0531-8904787 Contact Person: Mr. Liu Xiaowei
35.	Machinery Industry Auto-office Equipment Testing Institute	CNCA—01C—020: Information Technology Equipments (Only Coping Machines)	No.7 Changtu Road, Hongqiao District Tianjin, P.R.China Postal Code:300131 Tel: 022-26650880 Fax: 022-26650880 Contact Person: Ms. Leng Xinxin
36.	Shanghai Institute of Process Automation Instrumentation Inspection and Testing Institute of Instruments and Automatic Systems	CNCA—01C—021: Information Technology Equipments Finance and Trade Settlement Equipment (EMC)	No.103 Cao Bao Road, Shanghai, P.R. China Postal Code:200233 Tel: 021-64368180 Contact Person: Mr. Xu Jianping
37.	Beijing Zunguan Information Technology Product Quality Testing Certification Limited Co. (National Computer Quality Supervising Testing Center)	CNCA—01C—021: Information Technology Equipments Finance and Trade Settlement Equipment (EMC)	No.211 Beisihuan Middle Road, Haidian District, Beijing, P.R. China Postal Code:100083 Tel:010-82387862 Contact Person: Ms. Fu Rongmei



38.	Hunan Apparatus Research Institute Apparatus Test Laboratory	CNCA—01C—010: Low-Voltage Electrical Apparatus Low-Voltage Switchgear Assembly CNCA—01C—011: Low-Voltage Electrical Apparatus Switch and Control Equipment CNCA—01C—012: Low-Voltage Electrical Apparatus Installation Protective Equipment	No.4 Xinzhong Road, Changsha, Hunan,P.R. China Postal Coad: 410009 Tel: 0731-5414370 Fax: 0731-5412094 Contact Person: Mr. Xie Lin
39.	Wuhan High Voltage Research Institute State Power Corporation of China	CNCA—01C—012: Low-Voltage Electrical Apparatus Installation Protective Equipment	No.143 Luo Yu Road, Hongshan District Wuhan Hubei Postal Code:430074 Tel: 027-87445849 Tax: 027-87445634 Contact Person: Mr. Wan Dechun
40.	Suzhou New & HI-TECH Industrial Development Zone Test Institute for Electrical Equipment	CNCA—01C—011: Low-Voltage Electrical Apparatus Switch and Control Equipment	NO.7 Jiu hao Qujian Road, Suzhou New District,P.R. China Postal Code:215011 Tel: 0512-8252753 Fax: 0512-8081686 Contact Person: Mr.Hu Delin
41.	China National Computer Peripheral Equipment Quality Supervising Test Center	CNCA—01C—021: Information Technology Equipments Finance and Trade Settlement Equipment (EMC)	36 Macheng Road, Hangzhou, Zhejiang, China Postal Code:310012 Tel: 0571-88828284 Fax: 0571-88076069 Contact Person: Wang Weixiong
42.	Qingdao Supervision and Testing Center of Product Quality	CNCA—01C—002: Electric Wire and Cable Categories Electric Wires & Cables (CABL) CNCA—01C—010: Low-voltage Electrical Apparatus Low-	No.173, Shenzhen Road, Laoshan District, Qingdao, Shandong, China Postal Code:266061

		<p>Voltage Switchgear Assembly</p> <p>CNCA—01C—011: Low-voltage Electrical Apparatus Switch and Control Equipment</p> <p>CNCA—01C—012: Low-voltage Electrical Apparatus Installation Protective Equipment</p> <p>CNCA—03C—027: Tyre Products</p>	<p>Tel:0532-88918033</p> <p>Fax:0532-88918001/8100</p> <p>Contact Person:</p>
43.	Hefei General Machinery & Electrical Products Inspection Institute	<p>CNCA—01C—016: Household and Similar Use Appliances</p>	<p>No.888, Changjiang West Road, Hefei, Anhui, China</p> <p>Postal Code: 230031</p> <p>Tel: 0551-5316828</p> <p>Fax: 0551-5325105</p> <p>Contact Person:</p>
44.	Liaoning Provincial Institute of Product Quality Supervision Inspection/ Shenyang Institute of Products Quality Supervision and Inspection	<p>CNCA—01C—002: Electric Wire and Cable Categories Electric Wires &amp; Cables (CABL)</p> <p>CNCA—01C—003: Switches for Circuit, Installation Protective and Connection Devices Plugs and Socket-Outlets for Household and Similar General Purpose</p> <p>CNCA—01C—010: Low-voltage Electrical Apparatus Low-Voltage Switchgear Assembly</p> <p>CNCA—01C—016: Household and Similar Use Appliances</p> <p>CNCA—12C—049:</p>	<p>No.9, Lane 3, Wenhua Road, Heping District, Shenyang, Liaoning, China/ No.26, Huaxiang Road, Tiexi District, Shenyang, Liaoning, China</p> <p>Postal Code: 110004/ 110022</p> <p>Tel: 024-23891751/ 024-25898768</p> <p>Fax: 024-23996587/ 024-25898718</p> <p>Contact Person:</p>
45.	Tianjin Test Institute for Generating and Distribution and Electric Control Equipment	<p>CNCA—01C—010: Low-voltage Electrical Apparatus Low-Voltage Switchgear Assembly</p>	<p>No.40, Nankou Road, Hebei District, Tianjin, China</p> <p>Postal Code: 300180</p>

		<p>CNCA—01C—011: Low-voltage Electrical Apparatus Switch and Control Equipment</p> <p>CNCA—01C—012: Low-voltage Electrical Apparatus Installation Protective Equipment</p>	<p>Tel: 022-84376018/26340928</p> <p>Fax: 022-84376022/26341376</p> <p>Contact Person:</p>
46.	Greatwall Electrical Test Research Institute	<p>CNCA—01C—010: Low-voltage Electrical Apparatus Low-Voltage Switchgear Assembly</p> <p>CNCA—01C—011: Low-voltage Electrical Apparatus Switch and Control Equipment</p> <p>CNCA—01C—012: Low-voltage Electrical Apparatus Installation Protective Equipment</p>	<p>No.6-6, Changkai Road, Qincheng District, Tianshui, Gansu, China</p> <p>Postal Code: 741018</p> <p>Tel: 0938-8381214-801</p> <p>Fax: 0938-8383344</p> <p>Contact Person:</p>
47.	Chongqing Electric Appliances Testing Center	<p>CNCA—01C—010: Low-voltage Electrical Apparatus Low-Voltage Switchgear Assembly</p> <p>CNCA—01C—011: Low-voltage Electrical Apparatus Switch and Control Equipment</p>	<p>No.99, Hongyancun, Yuzhong District, Chongqing, China</p> <p>Postal Code: 400043</p> <p>Tel: 023-63301878</p> <p>Fax: 023-63301878/63318968</p> <p>Contact Person:</p>
48.	Changzheng Electrical Research Institute	<p>CNCA—01C—010: Low-voltage Electrical Apparatus Low-Voltage Switchgear Assembly</p> <p>CNCA—01C—011: Low-voltage Electrical Apparatus Switch and Control Equipment</p> <p>CNCA—01C—012: Low-voltage Electrical Apparatus Installation Protective Equipment</p>	<p>No.126, Shanghai Road, Zunyi, Guizhou, China</p> <p>Postal Code: 563002</p> <p>Tel: 0852-8623693</p> <p>Fax: 0852-8623693</p> <p>Contact Person:</p>
49.	Shenyang Electrical Driving	<p>CNCA—01C—010: Low-voltage Electrical Apparatus Low-</p>	<p>No.10, Chaohu Street, Yuhong</p>

	Research Institute	Voltage Switchgear Assembly CNCA—01C—011: Low-voltage Electrical Apparatus Switch and Control Equipment CNCA—01C—012: Low-voltage Electrical Apparatus Installation Protective Equipment	District, Shenyang, Liaoning, China Postal Code: 110141 Tel: 024-25833213 Fax: 024-25313368 Contact Person:
50.	Zhejiang Testing and Inspection Institute for Mechanical and Electrical Products Quality	CNCA—01C—011: Low-voltage Electrical Apparatus Switch and Control Equipment CNCA—01C—012: Low-voltage Electrical Apparatus Installation Protective Equipment CNCA—01C—014: Electric Tools	No.17, Chuxin Road, Hangzhou, Zhejiang, China Postal Code: 310015 Tel: 0571-88027660 Fax: 0571-88027861 Contact Person:
51.	Mechanical and Electric Product Testing Center of Beijing Entry- Exit Inspection and Quarantine Bureau of P.R.China	CNCA—01C—016: Household and Similar Use Appliances CNCA—01C—017: Audio & Video products CNCA—01C—020: Information Technology Equipments CNCA—07C—031: Telecommunication Terminal Equipment	No.16, Ronghuazhong Road, Economy Technology Development District, Beijing, China Postal Code: 100176 Tel: 010-67888592 Fax: 010-67863835 Contact Person:
52.	Inspection and Quarantine Technique Center of Fujian Entry-Exit Inspection and Quarantine Bureau	CNCA—01C—003: Switches for Circuit, Installation Protective and Connection Devices Plugs and Socket-Outlets for Household and Similar General Purpose CNCA—01C—004: Switches for Circuits, Installation Protective and Connection Devices Switches for Household	CIQ Plaza, No.312, Hudong Road, Fuzhou, Fujian, China Postal Code: 350003 Tel: 0591-87065505 Fax: 0591-87065500 Contact Person:

		<p>and Similar Fixed-Electrical Installations</p> <p>CNCA—01C—006: Switches for Circuit, Installation Protective and Connection Devices Appliance Couplers for Household and Similar General Purpose</p> <p>CNCA—01C—013: Small-Power Motor</p> <p>CNCA—01C—022: Lighting Electrical Appliances</p>	
53.	Inspection and Quarantine Technology Centre of Xiamen Entry-Exit Inspection and Quarantine Bureau	CNCA—01C—016: Household and Similar Use Appliances	<p>No.37, Xingnan Road, Xiamen, Fujian, China</p> <p>Postal Code: 361026</p> <p>Tel: 0592-3269519</p> <p>Fax: 0592-3269519</p> <p>Contact Person:</p>
54.	Wuhan Product Quality Supervision & Inspection Institute	<p>CNCA—01C—002: Electric Wire and Cable Categories</p> <p>Electric Wires &amp; Cables (CABL)</p>	<p>No.70 Taibei road, Jiangan district, Wuhan, Hubei, China</p> <p>Postal Code: 430015</p> <p>Tel: 027-85790150</p> <p>Fax: 027-85795691</p> <p>Contact Person:</p>
55.	Shaanxi Provincial Institute of Product Quality Supervision and Inspection	<p>CNCA—01C—002: Electric Wire and Cable Categories</p> <p>Electric Wires &amp; Cables (CABL)</p>	<p>No.129, Yanta Road, Xi'an, Shaanxi, China</p> <p>Postal Code: 710054</p> <p>Tel: 029-83117206</p> <p>Fax: 029-83117204</p> <p>Contact Person:</p>
56.	Hebei Province Institution of Supervision and Inspection Product Quality	<p>CNCA—01C—002: Electric Wire and Cable Categories</p> <p>Electric Wires &amp; Cables (CABL)</p> <p>CNCA—01C—012: Low-voltage Electrical Apparatus</p>	<p>No.368, Gongnong Road, Shijiazhuang, Hebei, China</p> <p>Postal Code: 050051</p> <p>Tel: 0311-83012618</p>

		Installation Protective Equipment	Fax: 0311-83010654 Contact Person:
57.	Jilin Provincial Product Quality Supervision Test Inspection Institute	CNCA—01C—002: Electric Wire and Cable Categories Electric Wires & Cables (CABL)	No.7370, Weixing Road, Changchun, Jilin, China Postal Code: 130022 Tel: 0431-85374763 Fax: 0431-85374707 Contact Person:
58.	Tianjin Product Quality Inspection Technology Research Institute	CNCA—01C—002: Electric Wire and Cable Categories Electric Wires & Cables (CABL) CNCA—01C—016: Household and Similar Use Appliances CNCA—01C—021: Information Technology Equipments Finance and Trade Settlement Equipment (EMC) CNCA—01C—022: Lighting Electrical Appliances CNCA—12C—049:	No.26, Kaihua Road, Huayuan Industrial Area, Tianjin, China Postal Code: 300384 Tel: 022-23078638 Fax: 022-23078915 Contact Person:
59.	Hunan Province Commodity Quality Supervision Testing Institute	CNCA—01C—002: Electric Wire and Cable Categories Electric Wires & Cables (CABL) CNCA—01C—004: Switches for Circuits, Installation Protective and Connection Devices Switches for Household and Similar Fixed-Electrical Installations	No.41, Xinjian West Road, Changsha, Hunan, China Postal Code: 410007 Tel: 0731-5535680 Fax: 0731-5557071 Contact Person:
60.	Henan Institute of Product Quality Supervision and Inspection	CNCA—01C—002: Electric Wire and Cable Categories Electric Wires & Cables (CABL)	No.17, Dongming Street, Zhengzhou, Henan, China Postal Code: 450004 Tel: 0371-63318996 Fax: 0371-63318906

			Contact Person:
61.	Jiangsu Provincial Supervising & Testing Research Institute for Products Quality	CNCA—01C—002: Electric Wire and Cable Categories Electric Wires & Cables (CABL) CNCA—01C—003: Switches for Circuit, Installation Protective and Connection Devices Plugs and Socket-Outlets for Household and Similar General Purpose CNCA—01C—014: Electric Tools	No.227, Shigu Road, Nanjing, Jiangsu, China Postal Code: 210029 Tel: 025-84470202 Fax: 025-86608930 Contact Person:
62.	Jiangsu Institute of Measurement & Testing Technology	CNCA—01C—021: Information Technology Equipments Finance and Trade Settlement Equipment (EMC)	No.3, Guanghua East Street, Nanjing, Jiangsu, China Postal Code: 210007 Tel: 025-84636959 Fax: 025-84592093 Contact Person:
63.	Wuxi Institute of Supervision and Testing On Product Quality	CNCA—01C—015: Electric Welding Machines	No.6, Yingbin North Road, Dongting, Wuxi, Jiangsu, China Postal Code: 214101 Tel: 0510-88202376 Fax: 0510-88204261 Contact Person:
64.	Beijing Institute of Products Quality Supervision and Inspection	CNCA—01C—002: Electric Wire and Cable Categories Electric Wires & Cables (CABL)	No.3, Yuhui Nan Road, Chaoyang District, Beijing, China Postal Code: 100029 Tel: 010-84623945 Fax: 010-84623945/84639720 Contact Person:
65.	Commodity Quality Testing Center of Chongqing General Trading(Group) Co., Ltd.	CNCA—01C—002: Electric Wire and Cable Categories Electric Wires & Cables (CABL)	No.26, Xinyi Street, Yuzhong District, Chongqing, China Postal Code: 400011

		<p>CNCA—01C—003: Switches for Circuit, Installation Protective and Connection Devices Plugs and Socket-Outlets for Household and Similar General Purpose</p> <p>CNCA—01C—004: Switches for Circuits, Installation Protective and Connection Devices Switches for Household and Similar Fixed-Electrical Installations</p> <p>CNCA—01C—013: Small-Power Motor</p> <p>CNCA—01C—016: Household and Similar Use Appliances</p>	<p>Tel: 023-63724062</p> <p>Fax: 023-63716911</p> <p>Contact Person:</p>
66.	Ningbo Supervision and Inspection Institute of Products Quality	<p>CNCA—01C—016: Household and Similar Use Appliances</p> <p>CNCA—01C—022: Lighting Electrical Appliances</p>	<p>NO.28, Wang'ai Road, Jiangdong District, Ningbo, Zhejiang, China</p> <p>Postal Code: 315040</p> <p>Tel: 0574-87896407</p> <p>Fax: 0574-87889216</p> <p>Contact Person:</p>
67.	Wenzhou Institute of Calibration and Testing for Quality and Technical Supervision	<p>CNCA—01C—003: Switches for Circuit, Installation Protective and Connection Devices Plugs and Socket-Outlets for Household and Similar General Purpose</p> <p>CNCA—01C—004: Switches for Circuits, Installation Protective and Connection Devices Switches for Household and Similar Fixed-Electrical Installations</p>	<p>Testing Building, Tangjiaqiao South Road, Wenzhou, Zhejiang, China</p> <p>Postal Code: 325001</p> <p>Tel: 0577-88915572</p> <p>Fax: 0577-88915423</p> <p>Contact Person:</p>
68.	Northeast Electric Power Research Institute	<p>CNCA—01C—010: Low-voltage Electrical Apparatus Low-Voltage Switchgear Assembly</p>	<p>No.39, Siping Street, Heping District, Shenyang, China</p> <p>Postal Code: 110006</p> <p>Tel: 024-23102116</p>



			Fax: 024-23102116 Contact Person:
69.	Technical Center for Inspection & Quarantine of SDCIQ	CNCA—01C—013: Small-Power Motor CNCA—01C—014: Electric Tools	No.70, Qutangxia Road, Qingdao, Shandong, China Postal Code: 266002 Tel: 0532-82670658 Fax: 0532-80885039 Contact Person:
70.	Shanghai Institute of Measurement and Testing Technology	CNCA—01C—021: Information Technology Equipments Finance and Trade Settlement Equipment (EMC)	No.1500, Zhangheng Road, Shanghai, China Postal Code: 201203 Tel: 021-38839800 Fax: 021-50798375 Contact Person:
71.	Jiangsu Electronic Products Supervision and Inspection Institute	CNCA—01C—017: Audio & Video products CNCA—01C—020: Information Technology Equipments	No.107, Zhongqiaogexiang, Wuxi, Jiangsu, China Postal Code: 214073 Tel: 0510-85105775 Fax: 0510-85104572 Contact Person:
72.	Hangzhou Institute of Calibration and Testing for Quality and Technical Supervision	CNCA—01C—002: Electric Wire and Cable Categories Electric Wires & Cables (CABL)	No.98, Desheng Road, Hangzhou, China Postal Code: 310019 Tel: 0571-85372611 Fax: 0571-85372611 Contact Person:
73.	Anhui Province Institute of Product Quality Supervision Inspection	CNCA—01C—002: Electric Wire and Cable Categories Electric Wires & Cables (CABL)	Weiwu Road, Baohe Economic & Technical Development Zone, Hefei, China Postal Code: 230022 Tel: 0551-3429816

			Fax: 0551-3356281 Contact Person:
74.	State Radio Testing Center	CNCA—11C—048: Wireless local area network	No.80, Beilishi Road, Xicheng District, Beijing, China Postal Code: 100037 Tel: 010-68009195 Fax: 010-68009195 Contact Person:
75.	Xinjiang Uygur Autonomous Region Product Quality Supervision Testing Institute	CNCA—01C—002: Electric Wire and Cable Categories Electric Wires & Cables (CABL) CNCA—01C—010: Low-voltage Electrical Apparatus Low-Voltage Switchgear Assembly CNCA—12C—049:	No.167, Xinhua South Road, Urumchi, Xinjiang, China Postal Code: 830004 Tel: 0991-2817437 Fax: 0991-2817437 Contact Person:
76.	China Quality Supervision and Inspection Center for Electrical Measuring Instruments	CNCA—01C—022: Lighting Electrical Appliances	No.128, Haping Road, Harbin, Heilongjiang, China Postal Code: 150081 Tel: 0451-86681896/86611012 Fax: 0451-86681896-808/86611012 Contact Person:
77.	Shenyang Institute of Products Quality Supervision and Inspection (Shenyang Equity Inspection Group)	CNCA—01C—011: Low-voltage Electrical Apparatus Switch and Control Equipment	No.26, Huaxiang Road, Tiexi District, Shenyang, Liaoning, China Postal Code: 110022 Tel: 024-25898718 Fax: 024-25898768 Contact Person:
78.	Hubei Electric Power Testing	CNCA—01C—010: Low-voltage Electrical Apparatus Low-	No.361, Xudong Road, Wuhan,

	and Research Institute of Hubei Electric Power Company	Voltage Switchgear Assembly	Hubei, China Postal Code: 430077 Tel: 027-88566091 Fax: 027-86794495 Contact Person:
79.	Safety Test Inspection Center for Electrical Appliances of Ningbo Entry-Exit Inspection and Quarantine Bureau	CNCA—01C—016: Household and Similar Use Appliances	No.9, Mayuan Road, Ningbo, Zhejiang, China Postal Code: 315012 Tel: 0574-87169360 Fax: 0574-87169370 Contact Person:
80.	Jiangxi Product Quality Supervision Testing College	CNCA—01C—002: Electric Wire and Cable Categories Electric Wires & Cables (CABL)	No.9, Jiangda South Road, Nanchang, Jiangxi, China Postal Code: 330029 Tel: 0791-8331420 Fax: 0791-8321215 Contact Person:
81.	CQC Intime (Suzhou) Testing Technology Co.,Ltd./ Suzhou Testing Center for Information Technology Products	CNCA-01C-013: Small-Power Motor CNCA-01C-016: Household and Similar Use Appliances CNCA-01C-017: Audio & Video products CNCA-01C-020: Information Technology Equipments	Wuzhong Avenue, Wuzhong District, Wangshan Industry Park, Suzhou, Jiangsu, China TEL: 0512-66303627/ 0512-66303620
82.	Zhenjiang institute for Products Quality Supervision & Inspection	CNCA-01C-010: Low-voltage Electrical Apparatus Low-Voltage Switchgear Assembly	No.28 Xuefu Rd. Zhenjiang Jiangsu China Tel: 0511-88897077

### **Approval (Certification) Agencies**

No.	Name of the Institution	The Designated Business Scope	Address and Communication
1	China Quality Certification Center	CNCA—01C—001: Electric Wire and Cable Categories Cord Sets CNCA—01C—002: Electric Wire And Cable Categories Electric Wires & Cables (CABL) CNCA—01C—003: Switches for Circuit, Installation Protective and Connection Devices Plugs And Socket-Outlets For Household And Similar General Purpose CNCA—01C—004: Switches for Circuits, Installation Protective and Connection Devices Switches for Household and Similar Fixed-Electrical Installations CNCA—01C—005: Switches for Circuit, Installation Protective and Connection Devices Plugs and Socket-outlets for Industrial Purpose CNCA—01C—006: Switches for Circuit, Installation Protective and Connection Devices Appliance Couplers for Household and Similar General	15. Fangcaodixijie, Beijing, China Postal Code: 100020 Tel: 010-65001830 Contact Person: Mr. Li Huailin

No.	Name of the Institution	The Designated Business Scope	Address and Communication
		<p>Purpose</p> <p>CNCA—01C—007: Switches for Circuit, Installation Protective and Connection Devices</p> <p>Thermal-links</p> <p>CNCA—01C—008: Switches for Circuits, Installation Protective and Connection Devices</p> <p>Enclosures for Accessories for Household and Similar Fixed Electric Installations</p> <p>CNCA—01C—009: Switches for Circuits, Installation Protective and Connection Devices</p> <p>Cartridge Fuse-Links Of Miniature Fuses</p> <p>CNCA—01C—010: Low-voltage Electrical Apparatus Low-Voltage Switchgear Assembly</p> <p>CNCA—01C—011: Low-voltage Electrical Apparatus Switch And Control Equipment</p> <p>CNCA—01C—012: Low-voltage Electrical Apparatus Installation Protective Equipment</p> <p>CNCA—01C—013: Small-Power Motor</p> <p>CNCA—01C—014: Electric Tools</p>	

No.	Name of the Institution	The Designated Business Scope	Address and Communication
		CNCA—01C—015: Electric Welding Machines CNCA—01C—016: Household and Similar Use Appliances CNCA—01C—017: Audio & Video products CNCA—01C—018: Audio and Video apparatus Equipment and Components for Cable Distribution Systems of Sound and Television Signals (EMC) CNCA—01C—019: Audio And Video Apparatus Satellite Television Receivers (EMC) CNCA—01C—020: Information Technology Equipments CNCA—01C—021: Information Technology Equipments Finance and Trade Settlement Equipment (EMC) CNCA—01C—022: Lighting Electrical Appliances CNCA—07C—031: Telecommunication Terminal Equipment	


### **Labelling Requirements**

The Regulations for Compulsory Product Certification Mark has been announced by CNCA on December 3, 2001, it is available, in Chinese and English language, at the website [www.cnca.gov.cn](http://www.cnca.gov.cn).

### Regulatory and Legislation Requirements

<describe any other regulatory and legislation requirements that need to met in order to market electrical and electronic equipment including validity time>

## Mains Voltage, Frequency and Mains Plug Configuration

Country	Mains Voltage and Tolerance	Mains Frequency and Tolerance	Applicable Legislation	Mains Plug Configuration				
				Domestic Standard	Please tick box if mandatory	Relevant International Standard	Extent of Alignment	Diagram of Mains Plug Configuration-
P. R, China	220 volts single phase	50 Hz						
	380 volts three phase tolerance	50 Hz						

### 5. PRODUCTS REQUIRING LISTING OR REGISTRATION

Listing/registration is similar to approvals except that there is no direct activity by the regulatory agency before a product is placed onto the market.

**Nil**

### 6. SUPPLIER DECLARATIONS

A supplier declaration regime requires a supplier in that economy to formally take responsibility for the compliance of the product/products. It may require compliance with particular standards and will require the supplier to hold relevant compliance documents for subsequent audits. A supplier declaration regime may also include a marking regime.



**Nil**

**7. ESSENTIAL SAFETY REQUIREMENTS**

An essential safety regime requires that products comply with recognised fundamental safety requirements (essential safety). The regime may include standards which are recognised to achieve the essential safety requirements.

**Nil**